



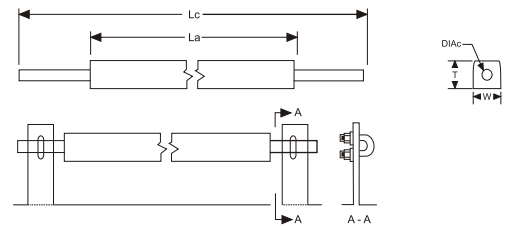
Tank Anodes

Zinc Anodes

Zinc Tank Anodes

Anodes contain straight galvanized steel core rod for direct welding or assembly to two flat bars with "U" bolts as shown.

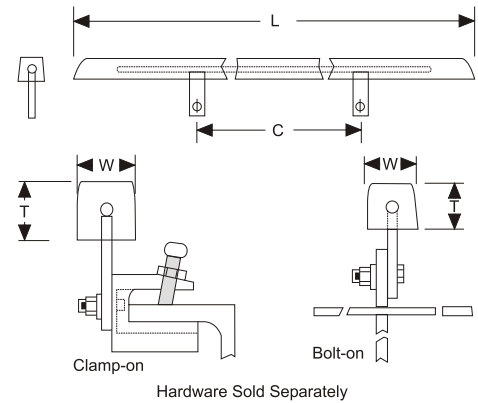
Anode Type	Alloy Wt.	Gross Wt.	L	W	T	Lc	DIAc
	Kg	Kg	(mm)	(mm)	(mm)	(mm)	(mm)
EPS 105 ZT	9.5	10.5	533	51	51	987	12
EPS 227 ZT	21.2	22.7	1220	51	51	1674	12
EPS 270 ZT	25.4	27.0	1220	54	54	1674	16
EPS 320 ZT	30.4	32.0	1220	60	60	1674	16
EPS 466 ZT	45.0	46.6	1220	76	76	1674	16
EPS 520 ZT	50.0	52.0	1525	70	70	1979	20



EPS - ZTB Bolt-on Series

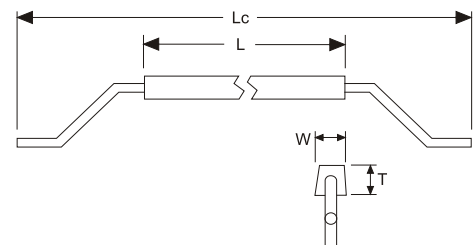
The core contains of two galvanized steel flat bars welded to a mild steel rod. Anodes can be clamped welded or bolted ballast structure

Anode Type	Wt	W	T	L	C
	Kg	(mm)	(mm)	(mm)	(mm)
EPS-123-ZTB	12.3	36	36	1219	610
EPS-227-ZTB	22.7	51	51	1219	610
EPS-272-ZTB	27.2	51	51	1524	914
EPS-318-ZTB	31.8	64	64	1219	610
EPS-454-ZTB	45.4	64	64	1524	914



EPS - ZTW Welded-on Series

Anode Type	Alloy Wt.	L	W	T	Lc	DIAc
	Kg	(mm)	(mm)	(mm)	(mm)	(mm)
EPS 105 ZTW	9.5	533	51	51	833	12
EPS 227 ZTW	21.2	1220	51	51	1520	12
EPS 270 ZTW	25.4	1220	54	54	1520	16
EPS 320 ZTW	30.4	1220	60	60	1520	16
EPS 466 ZTW	45.0	1220	76	76	1520	16
EPS 520 ZTW	50.0	1525	70	70	1825	20



Corrosion Specialist

ELECTRO PROTECTION SERVICES INDIA (P) LTD
(AN ISO 9001:2008 CERTIFIED COMPANY)

Plot No:6, Cauvery Street, Guruswamy Nagar Extn., Sembakkam, Chennai 600 073.
Phone : 91 44 22780677 / 22781745, Fax : 91 44 22780688
Email: sales@epsipl.com, Website : www.epsipl.com